



# STUART/MARTIN COUNTY CHAMBER OF COMMERCE

**May 2024**

**Registration is  
Required for All Events!**

## **CHAMBER EVENTS**

### **Business After Hours**

**WEDNESDAY, MAY 1ST**

5:30 - 7:00 PM

*Sponsored & Hosted by*

**DreamWorks Companies**

3380 S.W. 42nd Avenue  
Palm City

### **Business Before Breakfasts**

Tuesday, May 7th

7:45 AM

*Sponsored & Hosted by*

**The Sovana at Stuart**

1900 N.W. Federal Highway  
Stuart

Tuesday, May 21st

7:45 AM

*Sponsored by*

**Suncoast Mental Health**

*Hosted by*

**10th Street Community Center**

724 S.E. 10th Street  
Stuart

### **Aviation Luncheon**

Wednesday, May 8th

11:45 AM - 1:30 PM

*Sponsored by*

**Business Dev. Board of MC**

**Live Hearty**

**White Glove Moving & Storage**

*Hosted by*

**Monarch Country Club**

1801 S.W. Monarch Club Drive  
Palm City

The Chamber Conference Center is  
sponsored by T.C. Urgent Care

## **Sky's The Limit Auction Took Off in Style!**



*Chamber Trustee Tami Karol, Tami Karol Insurance Agency (4th from left) was the highest bidder of the night.*



*Special thanks to the Sky's The Limit Auction & Business After Hours Presenting Sponsor Treasure Coast Toyota of Stuart.*

The Chamber's annual Auction & Business After Hours, held on April 17th at Tradewind Aviation, exceeded all expectations thanks to our generous sponsors, donors, volunteers and bidders. More than 250 Chamber members and guests filled the huge hangar as they perused the vast amount of raffle and silent auction items. Past Chairman and Trustee Elliot Paul provided the live auction, which featured unique items, such as a life-size ceramic cow, a day in the life of Sheriff Snyder and more. Elliot even auctioned off President/CEO Joe Catrambone to kiss a pig. Special thanks to sponsors Treasure Coast Toyota of Stuart, Majestic Yachts USA, Owen Insurance, Proctor Construction, Bubbakoo's Burritos, Carrabba's Italian Grill and The Peach Cobbler Factory. Proceeds from the auction benefit the Joseph A. Catrambone Scholarship Fund and the Martin Chamber Foundation.

## **Florida State Representatives Update Members on Current Legislative Bills**



Chamber members enjoyed the ambiance of the elegant Crane Club at Tesoro as they were presented with the Florida legislative updates at the April 10th Luncheon, sponsored by FPL, WM and TourMasters Productions. Chamber Trustee Marshall Crutchfield, FPL (left) moderated the panel discussion with Florida representatives Gayle Harrell (2nd from left), Toby Overdorf and John Snyder. Also shown are Chamber Chairwoman/Trustee Dr. Lisa Grassam-Smith, Grassam Spine & Wellness Center and President/CEO Joe Catrambone (right).

### **2025 Welcome Guide Ad Sales Begin**

**Expose your business to more than 45,000 people year-round in our beautiful, full color glossy Welcome Guide & Business Directory.**

*To reserve your space, contact Sue Hedgepeth 287-1088, ext. 104  
sueh@stuartmartinchamber.org*

### **LEADERShip Class 34 Now Accepting Applicants**

**Learn the tools to help make a difference in Martin County during this esteemed 10-month leadership program.**

*To apply, contact Cindy LaConte 287-1088, ext. 106  
claconte@stuartmartinchamber.org*

# Business After Hours

**Wednesday • MAY 1, 2024**  
**5:30 PM - 7:00 PM**

*Sponsored  
&  
Hosted by:*

**DW**  
**DREAMWORKS**  
**COMPANIES**

**Sands Commerce Center**  
**3380 42nd Avenue • Palm City**

Located just east of S.R. 714/Martin Highway.

Take 1st left off of 42nd Ave.

Located at the end of the building on right.

***DUE TO PALM CITY TRAFFIC, MAKE SURE TO GIVE  
YOURSELF AMPLE TIME TO ARRIVE!***

Enjoy networking with fellow Chamber members  
while sipping on refreshments, sampling appetizers  
and checking out the craftsmanship of  
DreamWorks Companies.

**TICKETS - \$10 MEMBERS / \$15 PROSPECTIVE MEMBER**  
**[CLICK HERE TO PAY ON-LINE](#) - RSVP REQUIRED BY WEDNESDAY AT 2:00 PM**

# Business B4 Breakfasts

**TUESDAY • MAY 7th • 7:45 AM**

*Hosted & Sponsored by:*



**1900 N.W. Federal Highway • Stuart**

Located on the west side of U.S. #1, approx. 1 mile north of Roosevelt Bridge.  
Turn left onto N.W. Windemere Drive. Follow the road on the left to the entrance.

[CLICK HERE TO RSVP](#)

*Enjoy a complimentary continental breakfast,  
interesting conversation and the fellowship of Chamber members.*

**TUESDAY • MAY 21st • 7:45 AM**

*Sponsored by:*

*Hosted by:*



**10th Street Community Center**

**724 S.E. 10th Street • Stuart**

From Dixie Highway, travel east on S.E. Florida Ave.

Take first right onto S.E. Bayou Ave.

Turn left onto S.E. 10th Street. The Center is  
approx. 2 blocks on the right.

From Palm Beach Road, travel west on  
S.E. 10th St. for 1/4 mile. The Center is on left.

[CLICK HERE TO RSVP](#)

**THERE IS NO CHARGE FOR THESE EVENTS, BUT RSVP IS MANDATORY!**

**Business At Lunch**

*Presented By:*

# The Future of Aviation in Martin County

**LIVE HEARTY**



Wednesday, May 8, 2024, 11:45 am  
Monarch Country Club  
1801 SW Monarch Club Dr, Palm City



## **Andrew McBean**

Witham Field Airport Director  
Airport Development Update  
& Moderator



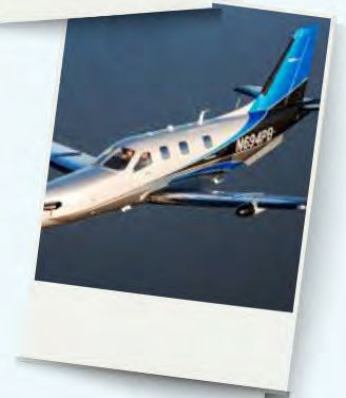
## **Ted Astolphi**

CEO  
Martin County Economic Council  
REACH Center Development Update



## **Jeff Lenorovitz**

Corporate Vice President -  
Communication  
Daher Aerospace  
Daher's long-term commitment to  
Witham Field





# STUART/MARTIN COUNTY CHAMBER OF COMMERCE

## ***Top 10 Reasons to advertise in the Welcome Guide & Business Directory!***

1. The Welcome Guide is a valuable source of newcomer, relocation and visitor information, published annually with a readership of over 40,000. A full color, free publication, the guide features over 140 pages of real estate and newcomer information, attractions, shopping, dining, sports and recreation, healthcare, education, business and industry, along with a membership directory listing all Chamber members alphabetically and categorically. The guide is also available in digital format on the Chamber website [stuartmartinchamber.org](http://stuartmartinchamber.org).
2. The Welcome Guide is distributed to more than 300 locations including real estate and other professional offices, banks, attorneys, mortgage and insurance companies, country clubs, rental communities, homeowners associations and marinas.
3. The Welcome Guide can be picked up at tourist attractions such as the Elliott Museum, House of Refuge, Children's Museum and Florida Oceanographic Center.
4. The Welcome Guide is hand delivered to over 1,000 Chamber members during Operation Thank You in November.
5. The Welcome Guide is distributed to all Martin County hotels and other accommodations.
6. The Welcome Guide is available at hair salons and spas, auto dealerships and repair shops, restaurants and all advertisers' locations.
7. The Welcome Guide is distributed to physician and dentist offices, hospitals, assisted living facilities and other medical-related businesses with waiting areas.
8. The Welcome Guide is distributed at all Chamber monthly events and trade shows presented during the year.
9. The Welcome Guide is mailed to potential new businesses looking to open or relocate to Martin County, and is also distributed by the Business Development Board to entice corporations to call Martin County home.
10. The Welcome Guide is direct mailed at no charge to visitors and potential new residents inquiring about Martin County. It is also available for pick up at the Stuart/Martin County Chamber of Commerce office.

Yes, I would like to advertise in the Welcome Guide.

I am interested in advertising. Contact me with more information.

I am a current Welcome Guide advertiser. I would like to renew my ad. Contact me for changes.

COMPANY NAME: \_\_\_\_\_

ADDRESS: \_\_\_\_\_

PHONE: \_\_\_\_\_ FAX: \_\_\_\_\_

COMPANY REPRESENTATIVE: \_\_\_\_\_

E-MAIL: \_\_\_\_\_

For more information contact Sue Hedgepeth (772) 287-1088, ext. 104 or [sueh@stuartmartinchamber.org](mailto:sueh@stuartmartinchamber.org)  
Fax completed form to: (772) 220-3437 or mail to: 1650 S. Kanner Highway, Stuart, FL 34997



# 2025 Welcome Guide & Business Directory

## Advertising Rates

As the official publication of the Stuart/Martin County Chamber of Commerce, The *Welcome Guide & Business Directory* is published as a tool to help promote economic growth and improve the quality of life in all of Martin County.

The *Welcome Guide & Business Directory* provides useful information to familiarize residents, visitors and businesses with all Martin County has to offer, including an alphabetical and categorical list of the entire Chamber business membership.

The *Welcome Guide & Business Directory*, with a readership of over 40,000, is available at the Chamber office and hundreds of area locations including hotels, country clubs, banks, salons, restaurants, real estate, physician and professional offices, tourist attractions and more!

**PLACE YOUR ORDER NOW...Closing Date is August 1, 2024**

### ADVERTISING RATE SCHEDULE:

Ad Size	Cost	Discount*	
Full Page	\$2,695	\$2,140	Back Cover .....\$3,900
2/3 Page	\$2,235	\$1,800	Inside Front Cover ..... \$3,350
1/2 Page	\$1,885	\$1,560	Inside Back Cover .....\$3,000
1/3 Page	\$1,275	\$1,100	Page 1 .....\$3,350
1/6 Page	\$ 775	\$ 700	Pages 2-4 .....\$3,000
			Pages 5-11 (No Discount)..... \$2,695

*\*Discounted rate for website advertisers. Website ad is an additional charge.*

### PUBLICATION PRODUCTION DEADLINES

Space Closing Date: **August 1, 2024**  
 Material Deadline: **August 30, 2024**  
 Distribution: **November 2024**

### FOR MORE INFORMATION

Contact Sue Hedgepeth  
 (772) 287-1088, ext. 104  
[sueh@stuartmartinchamber.org](mailto:sueh@stuartmartinchamber.org)

# LEAD NOW.

# LEARN HOW.

## LEADERship

MARTIN COUNTY

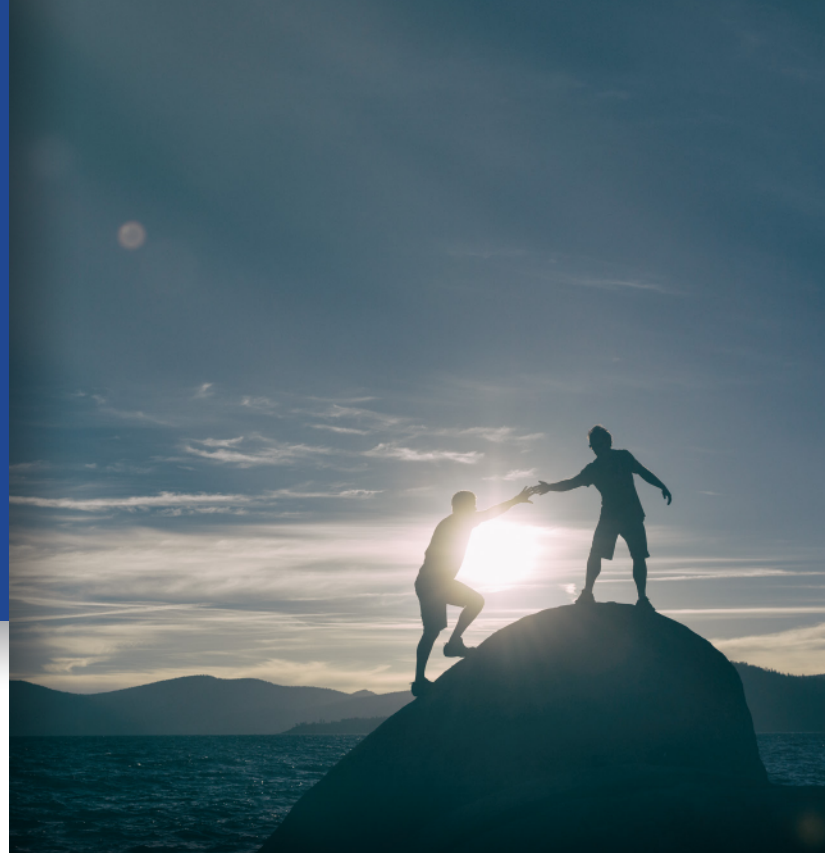
**L**earn the tools to help you make a difference in Martin County. This esteemed leadership education program guides participants through an in-depth look into our community and everything it has to offer its residents. Key components of the program include:

- Meeting the decision makers in business, education, health care, government, social services, arts and law enforcement
- Learning about the issues and asking the hard questions that affect Martin County
- Touring area facilities and their operations
- Networking with other leaders and making your voice heard and
- Committing to one program day a month for ten months.

For more information, contact LEADERship Martin County Program Director, Cindy LaConte, at [claconte@stuartmartinchamber.org](mailto:claconte@stuartmartinchamber.org) or (772) 341-6096.

Visit <https://www.stuartmartinchamber.org/the-chamber/leadership> to learn more and application.

Class 34 applications are now available and due June 20, 2024.



## Making a difference

LEADERship Martin County is an exciting program designed to prepare potential leaders to meet the challenges facing Martin County. Participants will explore critical issues through a series of presentations, seminars and field trips. Interaction with key decision makers, experts, community leaders and government representatives will assist participants in understanding the forces that impact their community, business and daily lives.

The success of the program, now in its 33rd year, is reflected in the broad base of leaders who have gone through the program and chosen to make

a difference. CEO's of many businesses and Non-Profit Organizations have been through the program, along with elected officials such as City and County Commissioners, Sheriff, City Police Chief, Property Appraiser, Clerk of the Court, Superintendent of Schools, School Board Members and many State Legislators.

**"Learn the tools to make a difference in Martin County."**



# ***BUSINESS2BUSINESS*** ***EXPO***

WOLF TECHNOLOGY CENTER  
INDIAN RIVER STATE COLLEGE  
2400 SE SALERNO RD, STUART

**BUSINESS AFTER HOURS**  
WEDNESDAY, JULY 17, 2024  
5:00PM-8:00PM



RSVP: [STUARTMARTINCHAMBER.ORG](http://STUARTMARTINCHAMBER.ORG) OR 772.267.1088X112

# **Save The Date!**

# **SPONSORSHIP OPPORTUNITIES AVAILABLE!**

**FOR MORE INFORMATION CONTACT US TODAY!**



[DebbiG@StuartMartinChamber.org](mailto:DebbiG@StuartMartinChamber.org)



[StuartMartinChamber.org](http://StuartMartinChamber.org)



772.287.1088 X-112





# BUSINESS2BUSINESS EXPO

## SPONSOR/EXHIBITOR CONTRACT

### PRESENTING SPONSOR:

**\$3500**

Event Presented By - Listing in Text Reminders - Banner displayed at Event - Spotlight on Social Media  
E-Blast to Members (Exp 90 days) - Logo on all Print Media - Recognition at Event - Logo on SMCC website event page -  
Logo/Listing on Event Program - Logo/Listing on Event Signage - Logo/Listing in SMCC Newsletter - Logo/Listing on SMCC Social  
Media - **Two (2) Display Tables**

### BAR SPONSOR:

**\$2500**

Business Logo on Cocktail Napkins at Bar - Banner displayed at Event - Spotlight on Social Media -  
E-Blast to Members (Exp 90 days) - Logo on all Print Media - Recognition at Event - Logo on SMCC website event page -  
Logo/Listing on Event Program - Logo/Listing on Event Signage - Logo/Listing in SMCC Newsletter - Logo/Listing on SMCC  
Social Media - **Two (2) Display Tables**

### PLATINUM SPONSOR:

**\$2000**

Banner displayed at Event - Spotlight on Social Media - E-Blast to Members (Exp 90 days)  
Logo on all Print Media - Recognition at Event - Logo on SMCC website event page - Logo/Listing on Event Program -  
Logo/Listing on Event Signage - Logo/Listing in SMCC Newsletter - Logo/Listing on SMCC Social Media - **Two (2) Display  
Tables**

### GOLD SPONSOR:

**\$1000**

Recognition at Event - Logo on SMCC website event page - Logo/Listing on Event Program - Logo/Listing on Event  
Signage - Logo/Listing in SMCC Newsletter - Logo/Listing on SMCC Social Media - **One (1) Display Table**

### SILVER SPONSOR:

**\$500**

Logo/Listing on Event Program - Logo/Listing on Event Signage - Logo/Listing in SMCC Newsletter -  
Logo/Listing on SMCC Social Media

### MEMBER EXHIBITOR:

**\$250**

### NON-MEMBER EXHIBITOR:

**\$350**

**THESE ARE TABLE TOP DISPLAYS ONLY! WALL SPACE & ELECTRIC IS FIRST COME FIRST SERVE.**

**DO YOU REQUIRE ELECTRICITY OR WALL DISPLAY?**

**WALL**

**ELECTRIC**

**BUSINESS NAME:**

**CONTACT NAME:**

**CONTACT CELL:**

**CONTACT EMAIL:**

**AUTHORIZED SIGNATURE:**

**SPONSORSHIP LEVEL:**

**AMOUNT DUE:**

**CREDIT CARD:**

**CHECK NUMBER:**

**CALL 772.287.1088 TO MAKE PAYMENT OR ONLINE AT [WWW.STUARTMARTINCHAMBER.ORG](http://WWW.STUARTMARTINCHAMBER.ORG)  
CHECKS PAYABLE TO STUART MARTIN COUNTY CHAMBER OF COMMERCE  
1650 S. KANNER HIGHWAY, STUART, FLORIDA 34990  
FOR MORE INFORMATION EMAIL [DEBBIG@STUARTMARTINCHAMBER.ORG](mailto:DEBBIG@STUARTMARTINCHAMBER.ORG)**

# March New Members

## **AAAC Wildlife Removal- Treasure Coast**

Mr. Alex Lauffenburger  
102 Salle Street S.E.  
Palm Bay FL 32909  
(772) 324-3412  
www.treasure-coast.aaacwild-  
liferemoval.com  
WILDLIFE REMOVAL

## **An Elegant Production**

Ms. Adora Ackerman Ignatovig  
Stuart FL 34997  
(610) 554-4958  
www.AnElegantProduction.com  
ENTERTAINMENT/MUSICIANS  
EVENT/PRODUCTION  
WEDDING PLANNING/DESIGN

## **Chapters Health Hospice**

Ms. Daniela Besch  
1860 S.W. Fountainview Blvd.  
Suites 324 & 330  
Port St. Lucie FL 34986  
(863) 464-7903  
www.chaptershealth.org  
HOSPICE  
NON PROFIT/HEALTH  
SERVICES  
GRIEF COUNSELING/  
PALLIATIVE/PEDIATRIC  
HOME HEALTH CARE/  
PRIVATE CARE

## **Culver's of Stuart**

Mr. Dale Rockefeller  
2501 S. Kanner Highway  
Stuart FL 34994  
(772) 210-5648  
www.culvers.com/  
restaurants/stuart-fl-  
kanner-hwy  
RESTAURANTS

## **Dark Seas Diving**

Mr. James Allen  
Palm City FL 34990  
(609) 709-9803  
FISHING/DIVE CHARTERS  
BOAT/YACHT CHARTERS/TOURS  
Referral: Rob Gluckman

## **Digital Agent**

Mr. Connor Phillips  
Jensen Beach FL 34957  
(404) 446-3117  
www.digitalagent.net  
SECURITY/TECHNOLOGY/VIRTUAL  
COMPUTER/NETWORKING/  
SALES/SERVICE/SOFTWARE/  
PHONES  
TECHNOLOGY

## **Elev8hope**

Ms. Rinamarie Shpiruk  
3700 S.E. Salerno Road  
Stuart FL 34997  
(772) 285-6026  
www.Elev8hope.org  
NON PROFIT/CHARITIES

## **Florida Coastal Roofing Solutions LLC**

Mr. Ron Thompson  
1551 S.E. S. Niemeyer Circle  
Port St. Lucie FL 34952  
(772) 621-6268  
www.floridacoastalroofing.com  
ROOFING/SALES/INSTALLATION

## **Ideal Nutrition**

Samantha Trautner  
1909 N.W. Federal Highway  
Stuart FL 34994  
(888) 557-2018  
www.idealnutritionnow.com  
FOOD SERVICE/DELIVERY

## **JDI Group**

Mr. Bill Cullity  
11641 Kew Gardens Avenue  
Suite 111  
Palm Beach Gardens FL 33410  
(561) 694-2505  
www.jdigroup.com  
EMPLOYEE BENEFIT SERVICES

## **Keith's Home Decor Etc., LLC**

Mr. Keith Begley  
1655 N.W. Jensen Beach Blvd.  
Jensen Beach FL 34957  
RETAILERS  
FURNITURE/ACCESSORIES/  
DESIGN/GIFTS

## **Michele Adler Coaching, LLC**

Ms. Michele Adler  
Jensen Beach FL 34957  
(561) 379-6584  
www.micheleadler.life  
TRAINING/PERSONNEL/  
EXECUTIVE/COACHING

**STUART/  
MARTIN COUNTY**



**CHAMBER OF  
COMMERCE**

**Do Business With  
Chamber Members!**

**They Make Our  
Community Great!**

# March New Members

## Real Talk Kingdom Ministries

Dr. Shirley Mangum  
Port Saint Lucie FL 34983  
www.realtalkkingdom  
ministries.org  
NON PROFIT/CHARITIES

## Ron Bowen Insurance

Mr. Ron Bowen  
Port St. Lucie FL 34952  
(772) 335-4368  
www.ronboweninsurance.com  
INSURANCE AGENCY

## Worldwide Flyworks & Outfitters

Ms. Margherita Hannon  
980 N.E. Dixie Highway  
Jensen Beach FL 34957  
(772) 444-3788  
worldwideflyworks.com  
FISHING/BAIT/TACKLE/ROD



## LEADERship Martin County

### CLASS 33 – Health & Human Services Day



LEADERship Class 33 spent the day touring the Health and Human Services facilities in Martin County. The Planning Committee coordinated a great day by conducting tours and presentations by local health services and non-profit organizations. Class members played an old-fashioned round of "rock, paper, scissors" as a stress reliever.



Thanks to the Planning Committee LEADERship Alumni: Agnieszka Marshall (25) Cheree Ramirez (27), Tim Kinane (1), Sharon Kinane (9), Cindy Groover (30), Elisabeth Glynn (26), Jill Ball (28) and Brandon McAllister (32). A special thank you to our breakfast sponsor, Jill Ball with VIP America.

# March Renewals

## **TWENTY-FIVE YEARS OR MORE**

**Anthony DeLucia, D.D.S.**  
**Atlantic Aviation -SUA**  
**European Kitchen & Bath**  
**Florida Power & Light Co.-TRUSTEE**  
**Forest Hills Memorial Park &  
Funeral Home**  
**Fox McCluskey Bush Robison, PLLC**  
**Greg Gardner's Wide Angle  
Photo/Video**  
**Mosley & Son Construction, Inc.**  
**Publix Super Market,  
Downtown Stuart #749**  
**Stuart News/TCPalm**  
**United Way of Martin County**  
**Zarro Mortgage Group/  
Donna Linton**

## **TWENTY - TWENTY-FOUR YEARS**

McNicholas & Associates, Inc.  
Tara Biek Creative Inc.

## **FIFTEEN - NINETEEN YEARS**

Rupp Marine, Inc.

## **TEN - FOURTEEN YEARS**

Blue Stream Fiber  
CareerSource Research Coast/  
St. Lucie County  
Two Men and A Truck Treasure Coast  
U. S. Sugar-**TRUSTEE**

## **FIVE - NINE YEARS**

American Stairs  
C.W. Roberts Contracting, Inc.-**TRUSTEE**

Culpepper & Terpening, Inc.  
Downtown Business Association of  
Stuart, Inc.  
Ellie's Downtown Deli & Catering  
Gertrude Walden Child Care Center, Inc.  
Marketing.com  
Martin County Police Athletic League  
Palm City Nursing & Rehab Center  
RE/MAX Community-Patrick Stracuzzi Team  
SpeedPro Imaging  
Spritz City Bistro  
Sweet Smoke Southern Kitchen  
The Keyes Co.  
Treasure Coast Toyota of Stuart-**TRUSTEE**

## **ONE - FOUR YEARS**

Arrow Title Services  
Be A Man Buy Land-**TRUSTEE**  
Beachfront Properties Real Estate  
Calusa Creek Ranch  
Communities Connected for Kids  
Cruiseplanners/Carolyn & Les  
Danforth Fundraising Consultants-**TRUSTEE**  
Dave's Airport Shuttle Service, LLC  
EZETech, LLC  
Guild Mortgage  
Hobe Sound Farmers Market-**TRUSTEE**  
M&M Realty Partners  
MIDFLORIDA Credit Union  
National Navy SEAL Museum  
Puroclean of Stuart/Veteran Owned!  
Shiner Law Group, P.A.  
Smith, Ball, Báez & Prather Florida  
Injury Lawyers  
TCI/Rood Landscape Services  
The B.A. Fund  
Wild Side Pawn and Gun-**TRUSTEE**



# STUART/MARTIN COUNTY CHAMBER OF COMMERCE

## May 2024



Florida Association of Chamber Professionals  
CERTIFIED CHAMBER OF COMMERCE

Please Post  
For Employees

1650 S. Kanner Highway, Stuart, FL 34994

287-1088 • Fax: 220-3437 • [www.stuartmartinchamber.org](http://www.stuartmartinchamber.org)

Sunday	Monday	Tuesday	Wednesday	Thursday	Friday	Saturday
 <b>B2B BUSINESS2BUSINESS EXPO</b> Wednesday, July 17th • 5:00-8:00 PM Indian River State College For information contact Debbi at 287-1088, ext. 112 DebbiG@stuartmartinchamber.org			<b>1</b> <b>Business After Hours</b> <b>5:30-7:00 PM</b> <b>DreamWorks Companies</b> 3380 S.W. 42nd Ave. Palm City	<b>2</b>	<b>3</b>	<b>4</b>
<b>5</b>	<b>6</b>	<b>Business B4 Breakfast</b> <b>7:45 AM</b> <b>The Sovana at Stuart</b> 1900 N.W. Federal Highway Stuart	<b>8</b> <b>Aviation Luncheon</b> <b>11:45AM</b> <b>Monarch Country Club</b> 1801 S.W. Monarch Club Dr. Palm City Sponsored by: <b>Live Hearty White Glove Moving &amp; Storage Business Devel. Board</b>	<b>9</b> <b>LEADERShip Planning Committee</b> <b>8:00 AM</b> <b>Chamber*</b>	<b>10</b>	<b>11</b>
 <b>HAPPY Mother's DAY</b>	<b>13</b>	<b>14</b>	<b>15</b> <b>Board Meeting</b> <b>7:30 AM</b> <b>Chamber*</b>	<b>16</b>	<b>17</b> <b>LEADERShip Alumni Board</b> <b>8:00 AM</b> <b>Chamber*</b>	<b>18</b>
<b>19</b>	<b>20</b>	<b>Business B4 Breakfast</b> <b>7:45 AM</b> <b>10th Street Community Center</b> 724 S.E. 10th St. Stuart Sponsor: <b>Suncoast Mental Health</b>	<b>22</b>	<b>23</b>	<b>24</b>	<b>25</b>
<b>26</b>	 <b>MEMORIAL DAY</b> <b>Chamber Closed</b>	<b>28</b>	<b>29</b> <b>Local Govt. &amp; Transportation Noon Chamber*</b>	<b>30</b>	<b>31</b>	

\* The Chamber Conference Center is sponsored by Treasure Coast Urgent Care