



STUART/MARTIN COUNTY CHAMBER OF COMMERCE

May 2024

**Registration is
Required for All Events!**

CHAMBER EVENTS

Business After Hours

WEDNESDAY, MAY 1ST

5:30 - 7:00 PM

Sponsored & Hosted by
DreamWorks Companies
3380 S.W. 42nd Avenue
Palm City

Business Before Breakfasts

Tuesday, May 7th
7:45 AM

Sponsored & Hosted by
The Sovana at Stuart
1900 N.W. Federal Highway
Stuart

Tuesday, May 21st
7:45 AM

Sponsored by
Suncoast Mental Health
Hosted by
10th Street Community Center
724 S.E. 10th Street
Stuart

Aviation Luncheon

Wednesday, May 8th
11:45 AM - 1:30 PM

Sponsored by
Business Dev. Board of MC
Live Hearty
White Glove Moving & Storage
Hosted by
Monarch Country Club
1801 S.W. Monarch Club Drive
Palm City

The Chamber Conference Center is
sponsored by T.C. Urgent Care

Sky's The Limit Auction Took Off in Style!



Chamber Trustee Tami Karol, Tami Karol Insurance Agency (4th from left) was the highest bidder of the night.



Special thanks to the Sky's The Limit Auction & Business After Hours Presenting Sponsor Treasure Coast Toyota of Stuart.

The Chamber's annual Auction & Business After Hours, held on April 17th at Tradewind Aviation, exceeded all expectations thanks to our generous sponsors, donors, volunteers and bidders. More than 250 Chamber members and guests filled the huge hangar as they perused the vast amount of raffle and silent auction items. Past Chairman and Trustee Elliot Paul provided the live auction, which featured unique items, such as a life-size ceramic cow, a day in the life of Sheriff Snyder and more. Elliot even auctioned off President/CEO Joe Catrambone to kiss a pig. Special thanks to sponsors Treasure Coast Toyota of Stuart, Majestic Yachts USA, Owen Insurance, Proctor Construction, Bubbakoo's Burritos, Carrabba's Italian Grill and The Peach Cobbler Factory. Proceeds from the auction benefit the Joseph A. Catrambone Scholarship Fund and the Martin Chamber Foundation.

Florida State Representatives Update Members on Current Legislative Bills



Chamber members enjoyed the ambiance of the elegant Crane Club at Tesoro as they were presented with the Florida legislative updates at the April 10th Luncheon, sponsored by FPL, WM and TourMasters Productions. Chamber Trustee Marshall Crutchfield, FPL (left) moderated the panel discussion with Florida representatives Gayle Harrell (2nd from left), Toby Overdorf and John Snyder. Also shown are Chamber Chairwoman/Trustee Dr. Lisa Grassam-Smith, Grassam Spine & Wellness Center and President/CEO Joe Catrambone (right).

2025 Welcome Guide Ad Sales Begin

Expose your business to more than 45,000 people year-round in our beautiful, full color glossy Welcome Guide & Business Directory.

*To reserve your space, contact Sue Hedgepeth 287-1088, ext. 104
sueh@stuartmartinchamber.org*

LEADERShip Class 34 Now Accepting Applicants

Learn the tools to help make a difference in Martin County during this esteemed 10-month leadership program.

*To apply, contact Cindy LaConte 287-1088, ext. 106
clacont@stuartmartinchamber.org*

Business After Hours

Wednesday • MAY 1, 2024
5:30 PM - 7:00 PM

*Sponsored
&
Hosted by:*

DW
DREAMWORKS
COMPANIES

Sands Commerce Center
3380 42nd Avenue • Palm City

Located just east of S.R. 714/Martin Highway.

Take 1st left off of 42nd Ave.

Located at the end of the building on right.

***DUE TO PALM CITY TRAFFIC, MAKE SURE TO GIVE
YOURSELF AMPLE TIME TO ARRIVE!***

Enjoy networking with fellow Chamber members
while sipping on refreshments, sampling appetizers
and checking out the craftsmanship of
DreamWorks Companies.

TICKETS - \$10 MEMBERS / \$15 PROSPECTIVE MEMBER
CLICK HERE TO PAY ON-LINE - RSVP REQUIRED BY WEDNESDAY AT 2:00 PM

Business B4 Breakfasts

TUESDAY • MAY 7th • 7:45 AM

Hosted & Sponsored by:



1900 N.W. Federal Highway • Stuart

Located on the west side of U.S. #1, approx. 1 mile north of Roosevelt Bridge.
Turn left onto N.W. Windemere Drive. Follow the road on the left to the entrance.

[CLICK HERE TO RSVP](#)

*Enjoy a complimentary continental breakfast,
interesting conversation and the fellowship of Chamber members.*

TUESDAY • MAY 21st • 7:45 AM

Sponsored by:

Hosted by:



10th Street Community Center

724 S.E. 10th Street • Stuart

From Dixie Highway, travel east on S.E. Florida Ave.
Take first right onto S.E. Bayou Ave.
Turn left onto S.E. 10th Street. The Center is
approx. 2 blocks on the right.

From Palm Beach Road, travel west on
S.E. 10th St. for 1/4 mile. The Center is on left.

[CLICK HERE TO RSVP](#)

THERE IS NO CHARGE FOR THESE EVENTS, BUT RSVP IS MANDATORY!

Business At Lunch

Presented By:

The Future of Aviation in Martin County

LIVE HEARTY



Wednesday, May 8, 2024, 11:45 am
Monarch Country Club
1801 SW Monarch Club Dr, Palm City



Andrew McBean

Witham Field Airport Director
Airport Development Update
& Moderator



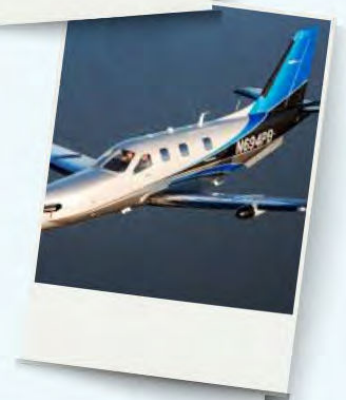
Ted Astolphi

CEO
Martin County Economic Council
REACH Center Development Update



Jeff Lenorovitz

Corporate Vice President -
Communication
Daher Aerospace
Daher's long-term commitment to
Witham Field





STUART/MARTIN COUNTY CHAMBER OF COMMERCE

Top 10 Reasons to advertise in the Welcome Guide & Business Directory!

1. The Welcome Guide is a valuable source of newcomer, relocation and visitor information, published annually with a readership of over 40,000. A full color, free publication, the guide features over 140 pages of real estate and newcomer information, attractions, shopping, dining, sports and recreation, healthcare, education, business and industry, along with a membership directory listing all Chamber members alphabetically and categorically. The guide is also available in digital format on the Chamber website stuartmartinchamber.org.
2. The Welcome Guide is distributed to more than 300 locations including real estate and other professional offices, banks, attorneys, mortgage and insurance companies, country clubs, rental communities, homeowners associations and marinas.
3. The Welcome Guide can be picked up at tourist attractions such as the Elliott Museum, House of Refuge, Children's Museum and Florida Oceanographic Center.
4. The Welcome Guide is hand delivered to over 1,000 Chamber members during Operation Thank You in November.
5. The Welcome Guide is distributed to all Martin County hotels and other accommodations.
6. The Welcome Guide is available at hair salons and spas, auto dealerships and repair shops, restaurants and all advertisers' locations.
7. The Welcome Guide is distributed to physician and dentist offices, hospitals, assisted living facilities and other medical-related businesses with waiting areas.
8. The Welcome Guide is distributed at all Chamber monthly events and trade shows presented during the year.
9. The Welcome Guide is mailed to potential new businesses looking to open or relocate to Martin County, and is also distributed by the Business Development Board to entice corporations to call Martin County home.
10. The Welcome Guide is direct mailed at no charge to visitors and potential new residents inquiring about Martin County. It is also available for pick up at the Stuart/Martin County Chamber of Commerce office.

Yes, I would like to advertise in the Welcome Guide.

I am interested in advertising. Contact me with more information.

I am a current Welcome Guide advertiser. I would like to renew my ad. Contact me for changes.

COMPANY NAME: _____

ADDRESS: _____

PHONE: _____ FAX: _____

COMPANY REPRESENTATIVE: _____

E-MAIL: _____

For more information contact Sue Hedgepeth (772) 287-1088, ext. 104 or sueh@stuartmartinchamber.org
Fax completed form to: (772) 220-3437 or mail to: 1650 S. Kanner Highway, Stuart, FL 34997



2025 Welcome Guide & Business Directory Advertising Rates

As the official publication of the Stuart/Martin County Chamber of Commerce, The *Welcome Guide & Business Directory* is published as a tool to help promote economic growth and improve the quality of life in all of Martin County.

The *Welcome Guide & Business Directory* provides useful information to familiarize residents, visitors and businesses with all Martin County has to offer, including an alphabetical and categorical list of the entire Chamber business membership.

The *Welcome Guide & Business Directory*, with a readership of over 40,000, is available at the Chamber office and hundreds of area locations including hotels, country clubs, banks, salons, restaurants, real estate, physician and professional offices, tourist attractions and more!

PLACE YOUR ORDER NOW...Closing Date is August 1, 2024

ADVERTISING RATE SCHEDULE:

Ad Size	Cost	Discount*	
Full Page	\$2,695	\$2,140	Back Cover\$3,900
2/3 Page	\$2,235	\$1,800	Inside Front Cover \$3,350
1/2 Page	\$1,885	\$1,560	Inside Back Cover\$3,000
1/3 Page	\$1,275	\$1,100	Page 1\$3,350
1/6 Page	\$ 775	\$ 700	Pages 2-4\$3,000
			Pages 5-11 (No Discount)..... \$2,695

**Discounted rate for website advertisers. Website ad is an additional charge.*

PUBLICATION PRODUCTION DEADLINES

Space Closing Date: **August 1, 2024**
Material Deadline: **August 30, 2024**
Distribution: **November 2024**

FOR MORE INFORMATION

Contact Sue Hedgepeth
(772) 287-1088, ext. 104
sueh@stuartmartinchamber.org

LEAD NOW.

LEARN HOW.

LEADERship

MARTIN COUNTY

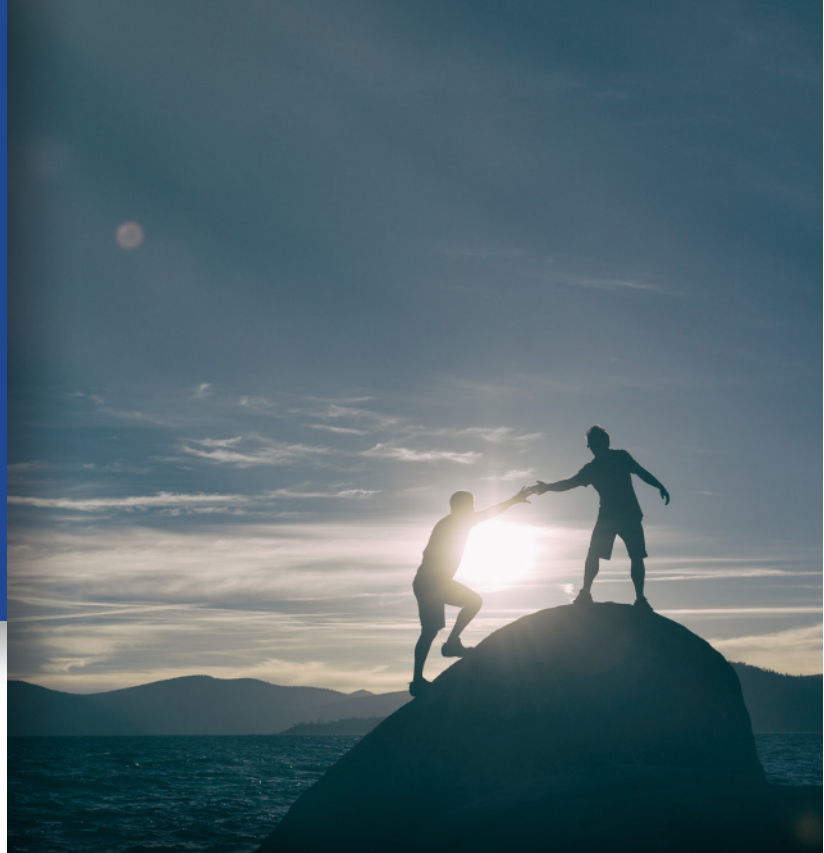
Learn the tools to help you make a difference in Martin County. This esteemed leadership education program guides participants through an in-depth look into our community and everything it has to offer its residents. Key components of the program include:

- Meeting the decision makers in business, education, health care, government, social services, arts and law enforcement
- Learning about the issues and asking the hard questions that affect Martin County
- Touring area facilities and their operations
- Networking with other leaders and making your voice heard and
- Committing to one program day a month for ten months.

For more information, contact LEADERship Martin County Program Director, Cindy LaConte, at claconte@stuartmartinchamber.org or (772) 341-6096.

Visit <https://www.stuartmartinchamber.org/the-chamber/leadership> to learn more and application.

Class 34 applications are now available and due June 20, 2024.



Making a difference

LEADERship Martin County is an exciting program designed to prepare potential leaders to meet the challenges facing Martin County. Participants will explore critical issues through a series of presentations, seminars and field trips. Interaction with key decision makers, experts, community leaders and government representatives will assist participants in understanding the forces that impact their community, business and daily lives.

The success of the program, now in its 33rd year, is reflected in the broad base of leaders who have gone through the program and chosen to make

a difference. CEO's of many businesses and Non-Profit Organizations have been through the program, along with elected officials such as City and County Commissioners, Sheriff, City Police Chief, Property Appraiser, Clerk of the Court, Superintendent of Schools, School Board Members and many State Legislators.

"Learn the tools to make a difference in Martin County."



BUSINESS2BUSINESS ***EXPO***

WOLF TECHNOLOGY CENTER
INDIAN RIVER STATE COLLEGE
2400 SE SALERNO RD, STUART

BUSINESS AFTER HOURS
WEDNESDAY, JULY 17, 2024
5:00PM-8:00PM



RSVP: STUARTMARTINCHAMBER.ORG OR 772.267.1088X112

Save The Date!

SPONSORSHIP OPPORTUNITIES AVAILABLE!

FOR MORE INFORMATION CONTACT US TODAY!



DebbiG@StuartMartinChamber.org



StuartMartinChamber.org



772.287.1088 X-112



BUSINESS2BUSINESS

SPONSOR/EXHIBITOR CONTRACT

EXPO

PRESENTING SPONSOR:

\$3500

Event Presented By - Listing in Text Reminders - Banner displayed at Event - Spotlight on Social Media
E-Blast to Members (Exp 90 days) - Logo on all Print Media - Recognition at Event - Logo on SMCC website event page -
Logo/Listing on Event Program - Logo/Listing on Event Signage - Logo/Listing in SMCC Newsletter - Logo/Listing on SMCC Social
Media - **Two (2) Display Tables**

BAR SPONSOR:

\$2500

Business Logo on Cocktail Napkins at Bar - Banner displayed at Event - Spotlight on Social Media -
E-Blast to Members (Exp 90 days) - Logo on all Print Media - Recognition at Event - Logo on SMCC website event page -
Logo/Listing on Event Program - Logo/Listing on Event Signage - Logo/Listing in SMCC Newsletter - Logo/Listing on SMCC
Social Media - **Two (2) Display Tables**

PLATINUM SPONSOR:

\$2000

Banner displayed at Event - Spotlight on Social Media - E-Blast to Members (Exp 90 days)
Logo on all Print Media - Recognition at Event - Logo on SMCC website event page - Logo/Listing on Event Program -
Logo/Listing on Event Signage - Logo/Listing in SMCC Newsletter - Logo/Listing on SMCC Social Media - **Two (2) Display
Tables**

GOLD SPONSOR:

\$1000

Recognition at Event - Logo on SMCC website event page - Logo/Listing on Event Program - Logo/Listing on Event
Signage - Logo/Listing in SMCC Newsletter - Logo/Listing on SMCC Social Media - **One (1) Display Table**

SILVER SPONSOR:

\$500

Logo/Listing on Event Program - Logo/Listing on Event Signage - Logo/Listing in SMCC Newsletter -
Logo/Listing on SMCC Social Media

MEMBER EXHIBITOR:

\$250

NON-MEMBER EXHIBITOR:

\$350

THESE ARE TABLE TOP DISPLAYS ONLY! WALL SPACE & ELECTRIC IS FIRST COME FIRST SERVE.

DO YOU REQUIRE ELECTRICITY OR WALL DISPLAY?

WALL

ELECTRIC

BUSINESS NAME:

CONTACT NAME:

CONTACT CELL:

CONTACT EMAIL:

AUTHORIZED SIGNATURE:

SPONSORSHIP LEVEL:

AMOUNT DUE:

CREDIT CARD:

CHECK NUMBER:

**CALL 772.287.1088 TO MAKE PAYMENT OR ONLINE AT WWW.STUARTMARTINCHAMBER.ORG
CHECKS PAYABLE TO STUART MARTIN COUNTY CHAMBER OF COMMERCE
1650 S. KANNER HIGHWAY, STUART, FLORIDA 34990
FOR MORE INFORMATION EMAIL DEBBIG@STUARTMARTINCHAMBER.ORG**

March New Members

AAAC Wildlife Removal- Treasure Coast

Mr. Alex Lauffenburger
102 Salle Street S.E.
Palm Bay FL 32909
(772) 324-3412
www.treasure-coast.aaacwild-
liferemoval.com
WILDLIFE REMOVAL

An Elegant Production

Ms. Adora Ackerman Ignatovig
Stuart FL 34997
(610) 554-4958
www.AnElegantProduction.com
ENTERTAINMENT/MUSICIANS
EVENT/PRODUCTION
WEDDING PLANNING/DESIGN

Chapters Health Hospice

Ms. Daniela Besch
1860 S.W. Fountainview Blvd.
Suites 324 & 330
Port St. Lucie FL 34986
(863) 464-7903
www.chaptershealth.org
HOSPICE
NON PROFIT/HEALTH
SERVICES
GRIEF COUNSELING/
PALLIATIVE/PEDIATRIC
HOME HEALTH CARE/
PRIVATE CARE

Culver's of Stuart

Mr. Dale Rockefeller
2501 S. Kanner Highway
Stuart FL 34994
(772) 210-5648
www.culvers.com/
restaurants/stuart-fl-
kanner-hwy
RESTAURANTS

Dark Seas Diving

Mr. James Allen
Palm City FL 34990
(609) 709-9803
FISHING/DIVE CHARTERS
BOAT/YACHT CHARTERS/TOURS
Referral: Rob Gluckman

Digital Agent

Mr. Connor Phillips
Jensen Beach FL 34957
(404) 446-3117
www.digitalagent.net
SECURITY/TECHNOLOGY/VIRTUAL
COMPUTER/NETWORKING/
SALES/SERVICE/SOFTWARE/
PHONES
TECHNOLOGY

Elev8hope

Ms. Rinamarie Shpiruk
3700 S.E. Salerno Road
Stuart FL 34997
(772) 285-6026
www.Elev8hope.org
NON PROFIT/CHARITIES

Florida Coastal Roofing Solutions LLC

Mr. Ron Thompson
1551 S.E. S. Niemeyer Circle
Port St. Lucie FL 34952
(772) 621-6268
www.floridacoastalroofing.com
ROOFING/SALES/INSTALLATION

Ideal Nutrition

Samantha Trautner
1909 N.W. Federal Highway
Stuart FL 34994
(888) 557-2018
www.idealnutritionnow.com
FOOD SERVICE/DELIVERY

JDI Group

Mr. Bill Cullity
11641 Kew Gardens Avenue
Suite 111
Palm Beach Gardens FL 33410
(561) 694-2505
www.jdigroup.com
EMPLOYEE BENEFIT SERVICES

Keith's Home Decor Etc., LLC

Mr. Keith Begley
1655 N.W. Jensen Beach Blvd.
Jensen Beach FL 34957
RETAILERS
FURNITURE/ACCESSORIES/
DESIGN/GIFTS

Michele Adler Coaching, LLC

Ms. Michele Adler
Jensen Beach FL 34957
(561) 379-6584
www.micheleadler.life
TRAINING/PERSONNEL/
EXECUTIVE/COACHING

**STUART/
MARTIN COUNTY**



**CHAMBER OF
COMMERCE**

**Do Business With
Chamber Members!**

**They Make Our
Community Great!**

March New Members

Real Talk Kingdom Ministries

Dr. Shirley Mangum
Port Saint Lucie FL 34983
www.realtalkkingdom
ministries.org
NON PROFIT/CHARITIES

Ron Bowen Insurance

Mr. Ron Bowen
Port St. Lucie FL 34952
(772) 335-4368
www.ronboweninsurance.com
INSURANCE AGENCY

Worldwide Flyworks & Outfitters

Ms. Margherita Hannon
980 N.E. Dixie Highway
Jensen Beach FL 34957
(772) 444-3788
worldwideflyworks.com
FISHING/BAIT/TACKLE/ROD



LEADERship Martin County

CLASS 33 – Health & Human Services Day



LEADERship Class 33 spent the day touring the Health and Human Services facilities in Martin County. The Planning Committee coordinated a great day by conducting tours and presentations by local health services and non-profit organizations. Class members played an old-fashioned round of "rock, paper, scissors" as a stress reliever.



Thanks to the Planning Committee LEADERship Alumni: Agnieszka Marshall (25) Cheree Ramirez (27), Tim Kinane (1), Sharon Kinane (9), Cindy Groover (30), Elisabeth Glynn (26), Jill Ball (28) and Brandon McAllister (32). A special thank you to our breakfast sponsor, Jill Ball with VIP America.

March Renewals

TWENTY-FIVE YEARS OR MORE

Anthony DeLucia, D.D.S.
Atlantic Aviation -SUA
European Kitchen & Bath
Florida Power & Light Co.-TRUSTEE
**Forest Hills Memorial Park &
Funeral Home**
Fox McCluskey Bush Robison, PLLC
**Greg Gardner's Wide Angle
Photo/Video**
Mosley & Son Construction, Inc.
**Publix Super Market,
Downtown Stuart #749**
Stuart News/TCPalm
United Way of Martin County
**Zarro Mortgage Group/
Donna Linton**

TWENTY - TWENTY-FOUR YEARS

McNicholas & Associates, Inc.
Tara Biek Creative Inc.

FIFTEEN - NINETEEN YEARS

Rupp Marine, Inc.

TEN - FOURTEEN YEARS

Blue Stream Fiber
CareerSource Research Coast/
St. Lucie County
Two Men and A Truck Treasure Coast
U. S. Sugar-**TRUSTEE**

FIVE - NINE YEARS

American Stairs
C.W. Roberts Contracting, Inc.-**TRUSTEE**

Culpepper & Terpening, Inc.
Downtown Business Association of
Stuart, Inc.
Ellie's Downtown Deli & Catering
Gertrude Walden Child Care Center, Inc.
Marketing.com
Martin County Police Athletic League
Palm City Nursing & Rehab Center
RE/MAX Community-Patrick Stracuzzi Team
SpeedPro Imaging
Spritz City Bistro
Sweet Smoke Southern Kitchen
The Keyes Co.
Treasure Coast Toyota of Stuart-**TRUSTEE**

ONE - FOUR YEARS

Arrow Title Services
Be A Man Buy Land-**TRUSTEE**
Beachfront Properties Real Estate
Calusa Creek Ranch
Communities Connected for Kids
Cruiseplanners/Carolyn & Les
Danforth Fundraising Consultants-**TRUSTEE**
Dave's Airport Shuttle Service, LLC
EZETech, LLC
Guild Mortgage
Hobe Sound Farmers Market-**TRUSTEE**
M&M Realty Partners
MIDFLORIDA Credit Union
National Navy SEAL Museum
Puroclean of Stuart/Veteran Owned!
Shiner Law Group, P.A.
Smith, Ball, Báez & Prather Florida
Injury Lawyers
TCI/Rood Landscape Services
The B.A. Fund
Wild Side Pawn and Gun-**TRUSTEE**



STUART/MARTIN COUNTY CHAMBER OF COMMERCE

May 2024



Florida Association of Chamber Professionals
CERTIFIED CHAMBER OF COMMERCE

Please Post
For Employees

1650 S. Kanner Highway, Stuart, FL 34994

287-1088 • Fax: 220-3437 • www.stuartmartinchamber.org

Sunday	Monday	Tuesday	Wednesday	Thursday	Friday	Saturday
 B2B BUSINESS2BUSINESS EXPO Wednesday, July 17th • 5:00-8:00 PM Indian River State College For information contact Debbi at 287-1088, ext. 112 DebbiG@stuartmartinchamber.org			1 Business After Hours 5:30-7:00 PM DreamWorks Companies 3380 S.W. 42nd Ave. Palm City	2	3	4
5	6	Business B4 Breakfast 7:45 AM The Sovana at Stuart 1900 N.W. Federal Highway Stuart	8 Aviation Luncheon 11:45AM Monarch Country Club 1801 S.W. Monarch Club Dr. Palm City Sponsored by: Live Hearty White Glove Moving & Storage Business Devel. Board	9 LEADERShip Planning Committee 8:00 AM Chamber*	10	11
 HAPPY Mother's DAY	13	14	15 Board Meeting 7:30 AM Chamber*	16	17 LEADERShip Alumni Board 8:00 AM Chamber*	18
19	20	Business B4 Breakfast 7:45 AM 10th Street Community Center 724 S.E. 10th St. Stuart Sponsor: Suncoast Mental Health	22	23	24	25
26	 MEMORIAL DAY Chamber Closed	28	29 Local Govt. & Transportation Noon Chamber*	30	31	

* The Chamber Conference Center is sponsored by Treasure Coast Urgent Care